

VITA 67

High Density & High Performance
RF Addition to the **OpenVPX™** Platform



Features

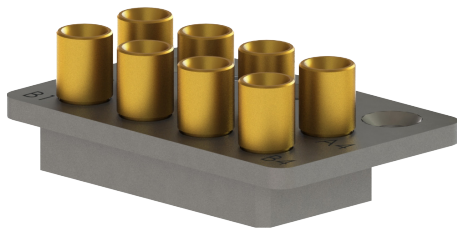
- The foundational coaxial interconnect for RF on the VPX platforms
- Cable assembly daughtercard modules that mate to backplane adapters
- Designed for side-by-side implementation with VITA 46 hardware
- Floating SMPM coaxial pins ensure excellent RF performance in any mating condition
- Available in 3U (4 position) and 6U (8 position) formats

Applications

- Robust and rugged high speed cabled solution
- High-reliability, high-density for aerospace & defense applications
- SIGINT, EWR, ground base station & communication systems, avionics, radar systems
- Air Transport Racks (ATRs) without Rear Transition Modules (RTMs) or limited speed through RTM

Benefits

- MIL-STD 810 for shock and vibration
- Minimal footprint of I/O slot
- Significant reduction in Mean-Time-To-Repair (MTTR) since rear panel interface enables quick disconnect
- Utilizes existing and proven SMPM interfaces
- Unique SV connector retention mechanism offers significant ease of assembly/disassembly



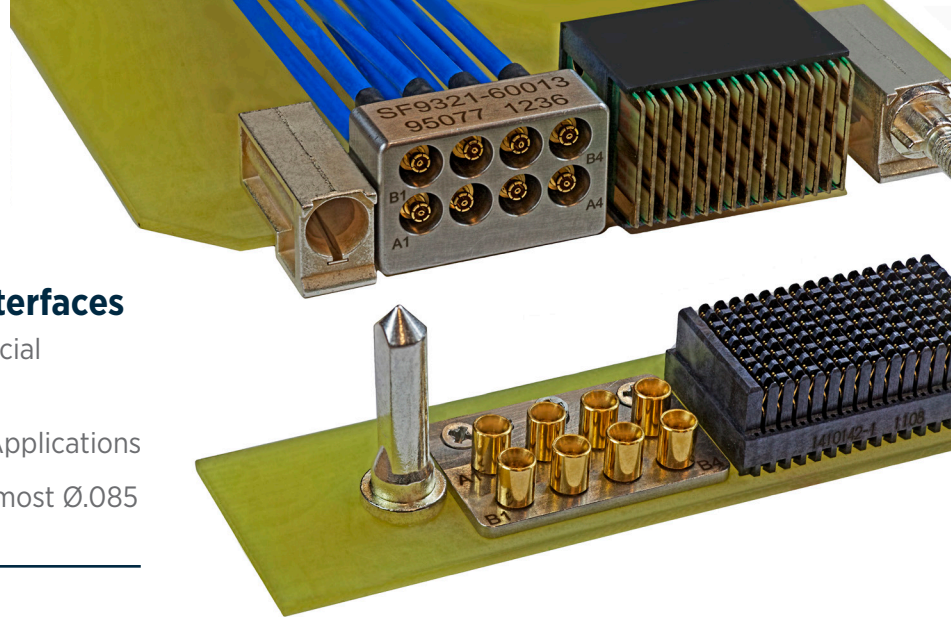
SMPM Motherboard VITA Connector

SMPM male on backside of board
Part Number: SF1132-6036



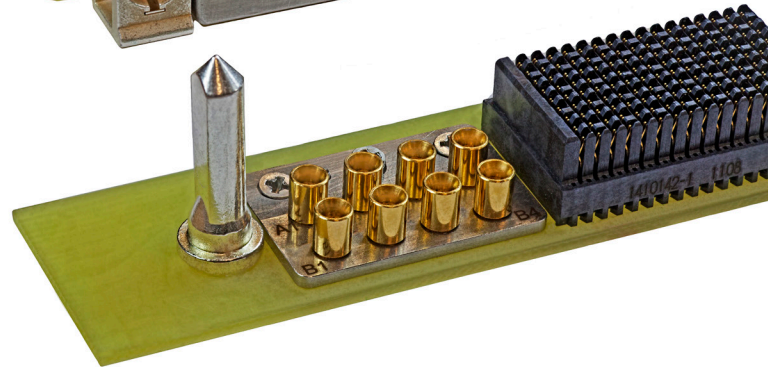
SMPM Daughtercard VITA Connector

Configurable to any .085 or smaller cable type
Part Number: SF9321-60013



Based on Industry Standard SMPM Interfaces

- Proven performance in Military and Commercial Applications
- Ideal for High Frequency and High Density Applications
- Lightweight and versatile, can be cabled to most Ø.085 and smaller diameter coaxial cable types



Example: VITA 67.2 (6U) Configuration with Digital Connector and Guide Pins

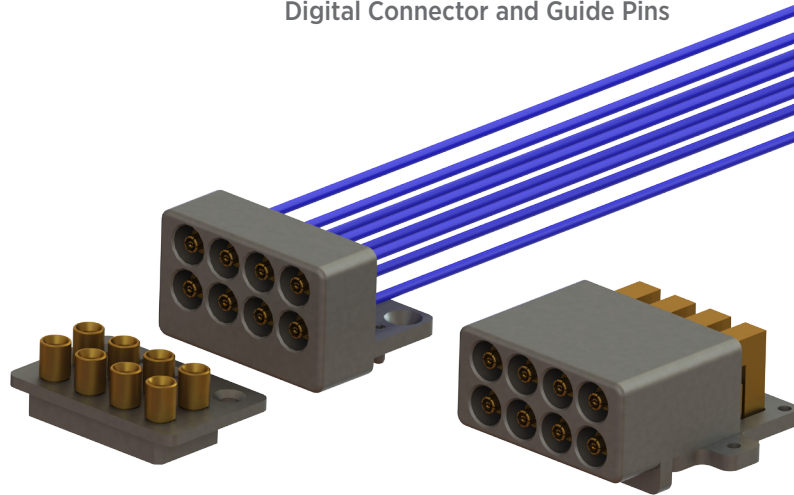
Specifications

Electrical


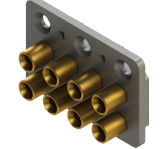



Return Loss	-14 dB Max
Insertion Loss	0.12 * √f (GHz), DC to 26.5 GHz
Isolation	> 100 dB, DC to 26.5 GHz

Mechanical

Axial Travel	.079" Min
Radial Float	±.010" Min
Engage Force	2.5 lbs (typical per contact)



Standard Part Numbers Listed on VITA 67 Spec

<p>SMPM Motherboard VITA Connector</p> <p>VITA 67.1: 4 Position (3U) SV P/N: SF1132-6037</p> 	<p>SMPM Motherboard VITA Connector</p> <p>VITA 67.2: 8 Position (6U) SV P/N: SF1132-6036</p> 
<p>SMPM Daughtercard VITA Connector</p> <p>VITA 67.1: 4 Position (3U) SV P/N: SF9321-60015</p> 	<p>SMPM Daughtercard VITA Connector</p> <p>VITA 67.2: 8 Position (6U) SV P/N: SF9321-60013</p> 
<p>SMPM Female VITA Snap-In Float Mount Pins</p> <p>SV P/N: 3221-40019 (Ø.047 Cable) SV P/N: 3221-40022 (Ø.085 Cable)</p> 	<p>SMPM Female VITA Pin Removal Tool</p> <p>SV P/N: 500-32-022</p> 
<p>SMPM Female VITA to SMA Male Cable Assembly for Ø.047 Cable</p> <p>SV P/N: 7032-6728-060 (length 6.0") SV P/N: 7032-6728-120 (length 12.0")</p> 	<p>SMPM Female VITA to SMA Male Cable Assembly for Ø.085 Cable</p> <p>SV P/N: 7032-6729-060 (length 6.0") SV P/N: 7032-6729-120 (length 12.0")</p> 